

MONTHLY MEMBERSHIP PROGRESS REPORT

District 325 J

Results as of: 6/30/2024

GMT:

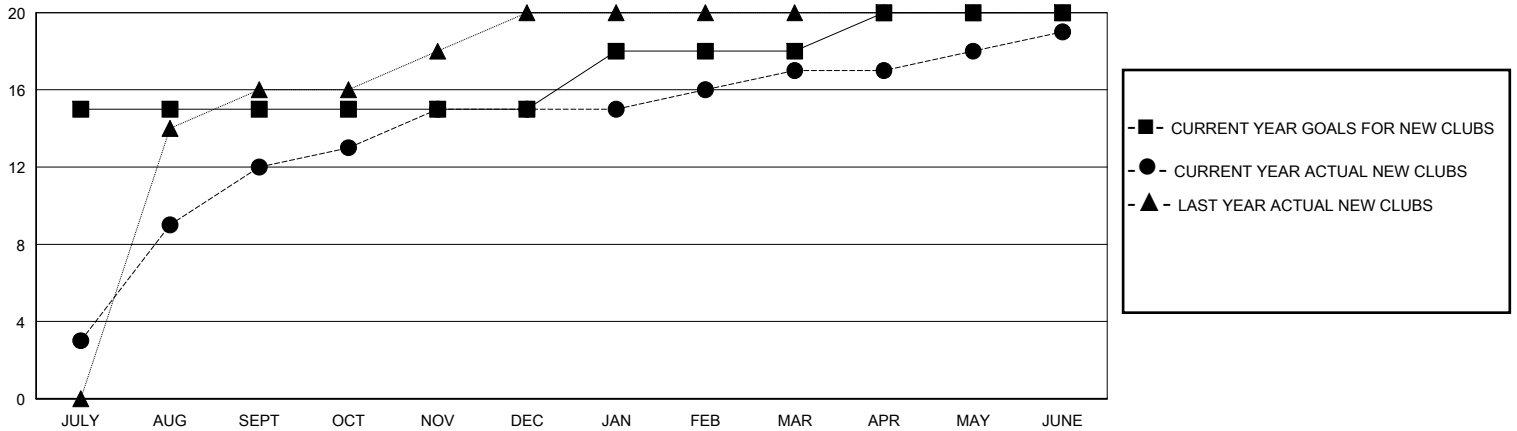
LOCATION NEPAL

GMT CA

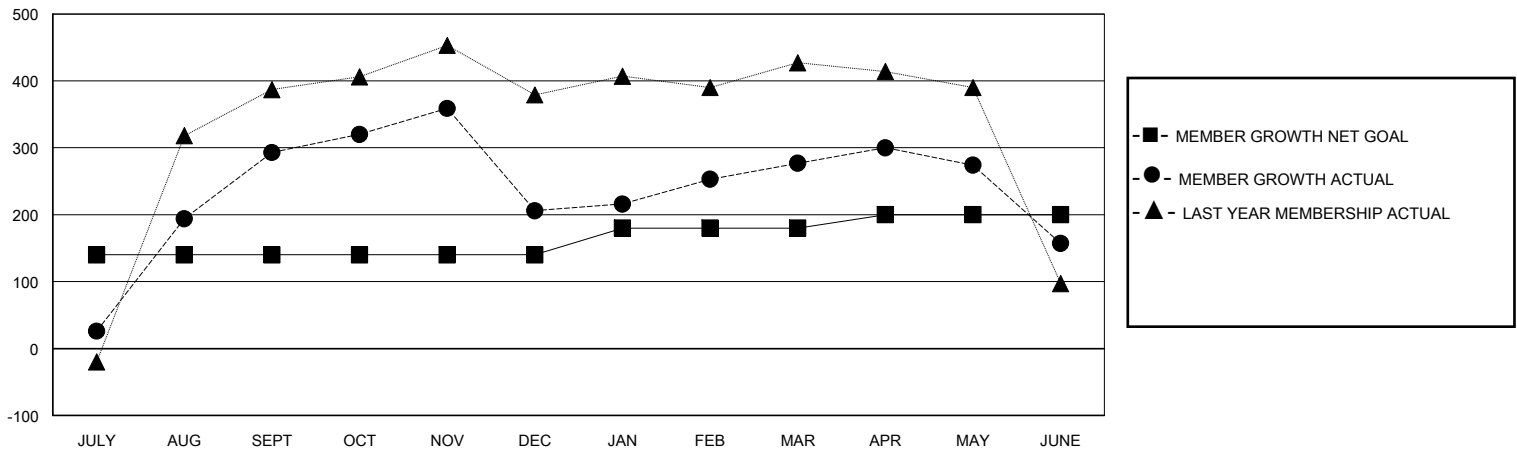
Clubs			
RESULTS FOR 2023-2024			
QUARTER	NEW CLUB GOAL	NEW CLUBS	DROPPED CLUBS
JULY/AUG/SEPT	15	12	0
OCT/NOV/DEC	0	3	4
JAN/FEB/MAR	3	2	1
APR/MAY/JUNE	2	2	4

Members			
RESULTS FOR 2023-2024			
QUARTER	MEMBER GROWTH NET GOAL	MEMBER GROWTH ACTUAL	DROPPED MEMBERS ACTUAL (including transfers)
JULY/AUG/SEPT	140	384	91
OCT/NOV/DEC	0	120	205
JAN/FEB/MAR	40	164	84
APR/MAY/JUNE	20	84	187

GOALS AND ACTUAL NEW CLUBS CUMULATIVE



GOALS AND ACTUAL MEMBERS CUMULATIVE



DROPPED CLUBS: 9	
DROPPED MEMBERS	
DECEASED	0
CLUB CANCELLED	155
OTHER	410
TOTAL	565

78 CLUBS OF 111 ADDED 1 OR MORE NEW MEMBERS

<u>GENDER DISTRIBUTION</u>	
MALE	1,628 (67.66%)
FEMALE	778 (32.34%)

[CLICK HERE FOR CUMULATIVE MEMBERSHIP DATA](#)

TOTAL FAMILY UNIT MEMBERS	1,688
FAMILY MEMBERS PAYING HALF DUES	1,120